

# ETI/miniSER

The new device for easy management of the Bpt's video entry systems.

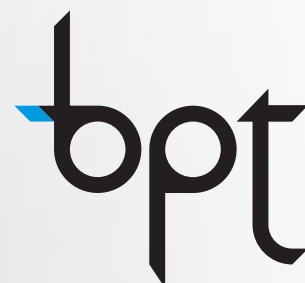
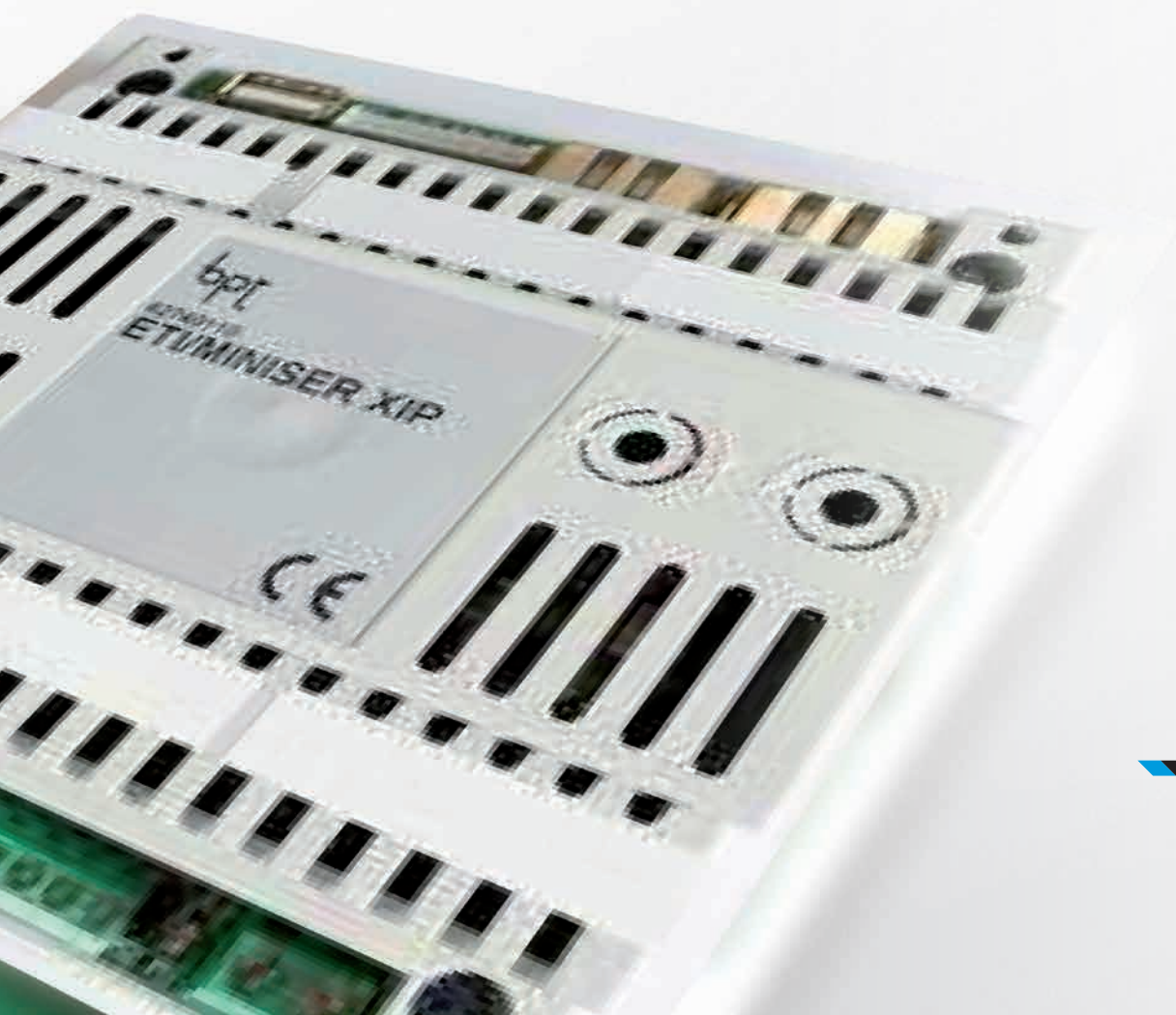
## PLUS

- ◆ Manages calls to/from analog devices via ETI/XIP
- ◆ Centralizes access control functions
- ◆ Includes 6 UNIVERSAL licenses (LIC/APP or LIC/GST) allowing the interoperation of mobile devices equipped with XIPMobile App or third-party devices.
- ◆ Supports additional BPT licences (LIC/APP or LIC/GST)

## SPECIAL FEATURES

- ◆ Call Forwarding (but no time/week scheduling)
- ◆ Master operation for ETI / XIPs gateways
- ◆ Support for Multiserver systems
- ◆ Up to 10 simultaneous calls to SIP devices or mixed groups (X1- VoIP)

## COMPATIBILITY SYSTEMS



**NET Connectivity** The server is equipped with two Ethernet 10/100 Mbits interfaces with RJ45 connector, configurable in "switch" mode or "dual-network" mode. First mode permits to use the device as a switch, like done now by an ETI/XIP. Second one, allows to separate a home LAN (into an apartment) from a common LAN (that of a building) permitting a user to use a smartphone to receive calls from the main Entry Panel but at the same time to be able to surf the internet through his home network. All this happens in a secure way, so that each apartment with ETI/miniSER sees just its network and not that of other residents by sharing only the common LAN for receiving calls from the main entrance panel or by the concierge.

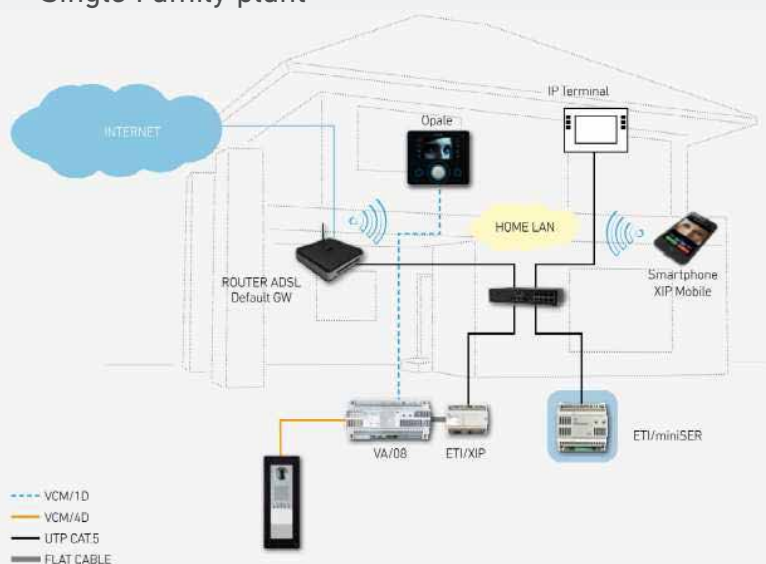


#### CONNECTORS

- ❏ 2 Ethernet network interfaces 10/ 100 Mbits
- ❏ USB to export event logs
- ❏ 12-24V DC power supply
- ❏ LEDs for various signals
- ❏ Dimensions: 6 DIN

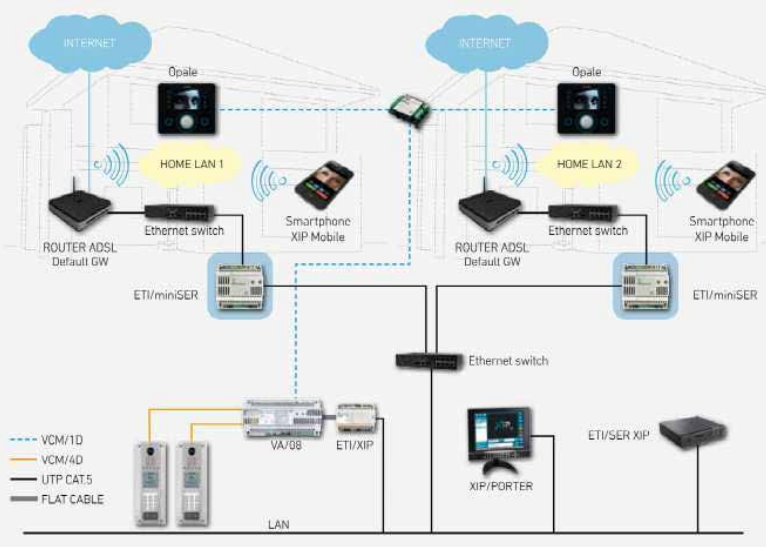
## SCENARIOS

### Single Family plant



The ETI/miniSER works like a normal server managing calls to analog receivers and to SIP based devices (third party terminal, iPhone, Android smartphone).

### Building plant



ETI/miniSER is set in "dual-network" mode. Home LAN is separated from common LAN. Each miniSER, one for each apartment, can manage calls to mobile devices as well as to third party terminals. ETI/SER Xip instead manages the concierge station and the call routing from the entry panels to the X1 receivers.



**BPT S.p.A. single member share company**  
Via Cornia, 1/b  
33079 Sesto al Reghena (PN) - Italy  
Ph. +39 0434.698111  
Fax +39 0434.698434  
www.bpt.it - info@bpt.it

BPT is a company of  
**CAMEGROUP**

