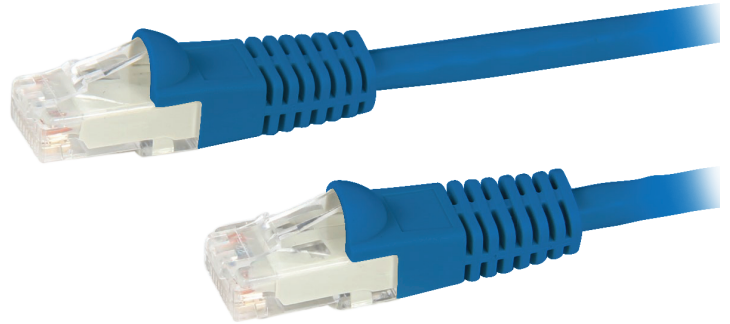


# CAT6 UTP PATCH LEADS - 250MHZ

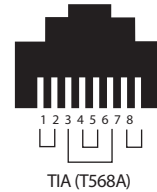
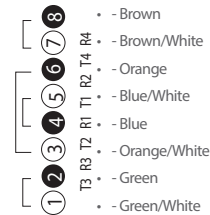
The Cat6 UTP patch leads conform to the TIA/EIA-568-B specification. Patch leads are wired to the T568A pinout specification. They are individually channel tested and are made with tangle free slimline injection molded boots in various colours and lengths.



## FEATURES:

- Produced by an ISO9001 and ISO14001 certified manufacturer
- 100% tested and channel certified by 3P, UL and ETL
- Available in 10 colours
- Covered by lifetime warranty

## T568A Cabling Pinout Specifications



## PRODUCT CODES

| LENGTH | BLACK      | BLUE       | GREEN      | GREY       | ORANGE     | RED        | YELLOW     | PURPLE     | WHITE      |
|--------|------------|------------|------------|------------|------------|------------|------------|------------|------------|
| 0.3M   | NPLC6BK0.3 | NPLC6BL0.3 | NPLC6GN0.3 | NPLC6GY0.3 | NPLC6OR0.3 | NPLC6RD0.3 | NPLC6YL0.3 | NPLC6PP0.3 | NPLC6WH0.3 |
| 0.5M   | NPLC6BK0.5 | NPLC6BL0.5 | NPLC6GN0.5 | NPLC6GY0.5 | NPLC6OR0.5 | NPLC6RD0.5 | NPLC6YL0.5 | NPLC6PP0.5 | NPLC6WH0.5 |
| 1M     | NPLC6BK1   | NPLC6BL1   | NPLC6GN1   | NPLC6GY1   | NPLC6OR1   | NPLC6RD1   | NPLC6YL1   | NPLC6PP1   | NPLC6WH1   |
| 1.5M   | NPLC6BK1.5 | NPLC6BL1.5 | NPLC6GN1.5 | NPLC6GY1.5 | NPLC6OR1.5 | NPLC6RD1.5 | NPLC6YL1.5 | NPLC6PP1.5 | NPLC6WH1.5 |
| 2M     | NPLC6BK2   | NPLC6BL2   | NPLC6GN2   | NPLC6GY2   | NPLC6OR2   | NPLC6RD2   | NPLC6YL2   | NPLC6PP2   | NPLC6WH2   |
| 3M     | NPLC6BK3   | NPLC6BL3   | NPLC6GN3   | NPLC6GY3   | NPLC6OR3   | NPLC6RD3   | NPLC6YL3   | NPLC6PP3   | NPLC6WH3   |
| 5M     | NPLC6BK5   | NPLC6BL5   | NPLC6GN5   | NPLC6GY5   | NPLC6OR5   | NPLC6RD5   | NPLC6YL5   | NPLC6PP5   | NPLC6WH5   |
| 10M    | NPLC6BK10  | NPLC6BL10  | NPLC6GN10  | NPLC6GY10  | NPLC6OR10  | NPLC6RD10  | NPLC6YL10  | NPLC6PP10  | NPLC6WH10  |
| 15M    | NPLC6BK15  | NPLC6BL15  |            |            |            |            |            |            |            |
| 20M    | NPLC6BK20  | NPLC6BL20  |            |            |            |            |            |            |            |
| 30M    |            | NPLC6BL30  |            |            |            |            |            |            |            |